

Look. Listen. Do!  
Intelligent steelmaking.



Look.



Listen.



Do!

## Course Outline

# Preventive Maintenance



**BSE**  
**ACADEMY**  
Education for Excellence

# Course Outline

## Preventive Maintenance



---

### What it is

A seminar which explains the background and excellence of steel plant maintenance including the practical example of BSW steel works. The seminar focuses on maintenance concepts and fundamentals and especially on the planned downtime management and execution at the EAF melt shop.

---

### For whom it is

Maintenance and production managers, responsible for maintenance who wish to extend their knowledge about excellent mini-mill maintenance.

---

### What is required

Qualification: Technical background.

---

### What is in it

Concepts and Fundamentals

- Maintenance strategies, organization, costs, spare parts, planned downtime

Practice: How BSW does it

- Planned downtime management and observation
- Spare parts
- Work safety
- Workshops

---

### Duration

3 days

---

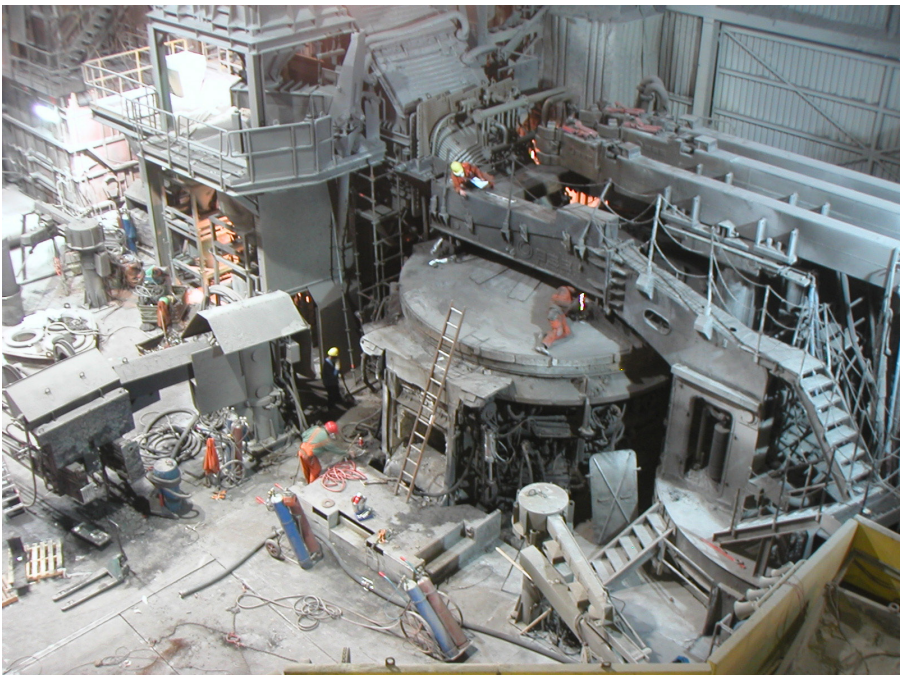
### Course language

English

## Detailed Program

Morning	<ul style="list-style-type: none"> <li>- Welcome</li> <li>- Maintenance concepts, fundamentals, experience</li> </ul>	<ul style="list-style-type: none"> <li>- BSW downtime management meltshop</li> <li>- BSW cooperation production - maintenance</li> <li>- Work safety</li> </ul>	<ul style="list-style-type: none"> <li>- Downtime program, observation on site</li> </ul>
Afternoon	<ul style="list-style-type: none"> <li>- Maintenance concepts, fundamentals, experience</li> <li>- Discussion</li> </ul>	<ul style="list-style-type: none"> <li>- Safety Induction</li> <li>- Plant tour, workshops, spare parts warehouse</li> </ul>	<ul style="list-style-type: none"> <li>- Concluding discussion</li> </ul>

Look forward to additional evening events that will enrich the program.



# Course Outline

## Preventive Maintenance



Look.

Listen.

Do!

### Your key lecturers

Dirk Riedinger

Electrical Engineer  
Senior Consultant

- Start as Project Engineer Electric at BSE in 1995
- Expert and/or Teamleader for consulting projects worldwide since 2002



Ralf Hetzel

Mechanical Engineer  
Senior Consultant

- Start as Project Engineer Mechanic at BSW in 1991
- Project Engineer Mechanic at BSE since 1993
- Project Engineer Mechanic BSE America since 1998
- Expert for consulting projects worldwide since 2005



Maurice Houzelle

Mechanical Supervisor, Hydraulic and Welding Specialist  
Chief Instructor BSE Seminars

- Start to work at BSW as mechanic on shift in 1973
- Mechanical Foreman on shift at BSW meltshop since 1993
- Mechanical Supervisor at BSW meltshop since 1988
- Chief Instructor BSE seminars since 2006



Stephanie Feger

Business Economist, Human Resources and Organization

- Start to work at BSE as Business Economist in 2008
- Expert for consulting projects worldwide since 2008



BSE ACADEMY

Robert-Koch-Straße 13  
D-77694 Kehl/Germany  
Phone (+49) 78 51/877- 114  
Fax (+49) 78 51/877-133  
info@bse-academy.de  
www.bse-kehl.de

